



# INTRO CORPORATION

Integrity, Value and Quality since 1976

## AMC02RA03R SPEC Sheet



### TABLE OF CONTENTS

*Page 1: Title Page*

*Page 2: Part Number Coding*

*Page 3: Drawing*

*Page 4: Contacts and Tools*

*Page 5: Mating Guide*

*Page 5: Quick Links*

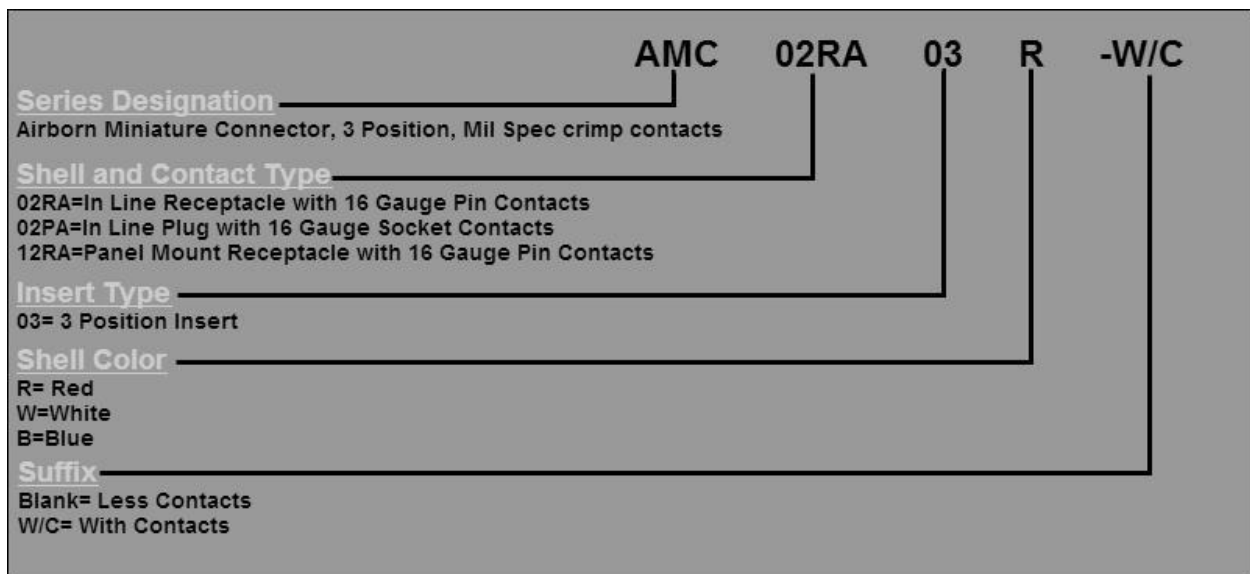


## AMC02RA03R

CONNECTOR, ELECTRICAL, RECEPTACLE, AIRBORNE MINIATURE CIRCULAR, COLOR RED



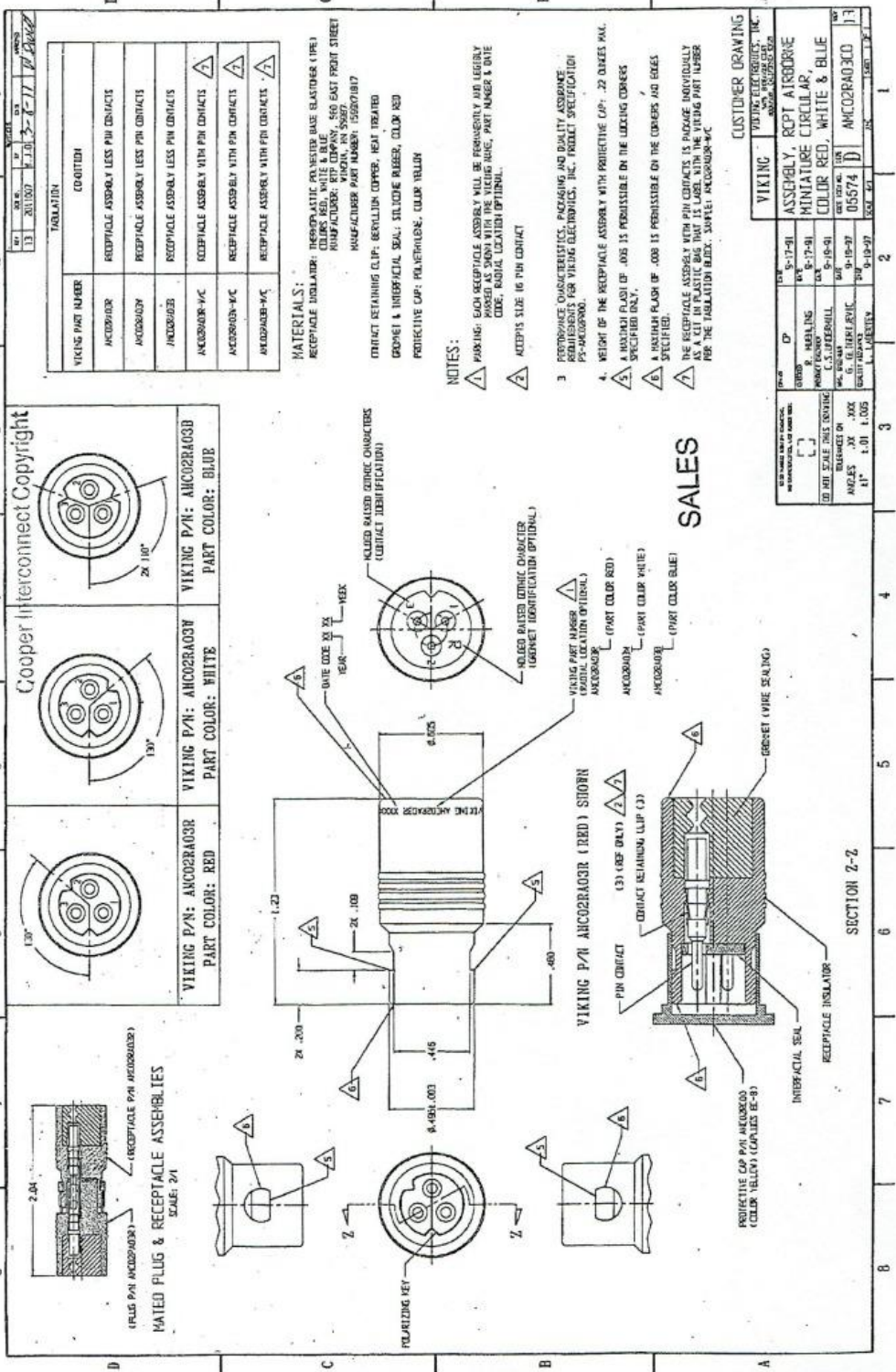
### ORDERING GUIDE



# AMCOR2A03X DRAWING

REFERENCE

JAN 10 2013



VIKING PART NUMBER	CONDITION
AMCOR2A03R	RECEPTACLE ASSEMBLY LESS PIN CONTACTS
AMCOR2A03V	RECEPTACLE ASSEMBLY LESS PIN CONTACTS
AMCOR2A03B	RECEPTACLE ASSEMBLY LESS PIN CONTACTS
AMCOR2A03R-4PC	RECEPTACLE ASSEMBLY WITH PIN CONTACTS
AMCOR2A03V-4PC	RECEPTACLE ASSEMBLY WITH PIN CONTACTS
AMCOR2A03B-4PC	RECEPTACLE ASSEMBLY WITH PIN CONTACTS

**MATERIALS:**  
 RECEPTACLE INSULATOR: THERMOPLASTIC POLYESTER BASE ELASTOMER (TPE)  
 RECEPTACLE ASSEMBLY: PET COMPANY, 560 EAST FRONT STREET  
 MOUNTAIN VIEW, IN 46057  
 INSULATION: MOUNTAIN VIEW, IN 46057  
 MOUNTAIN VIEW, IN 46057  
 CONTACT RETAINING CLIP: BERYLLIUM COPPER, HEAT TREATED  
 CONTACT & INTERFACIAL SEAL: SILICONE RUBBER, COLOR AS SHOWN  
 PROTECTIVE CAP: POLYURETHANE, COLOR YELLOW

**NOTES:**  
 1. MARKING: EACH RECEPTACLE ASSEMBLY WILL BE PERMANENTLY AND LEGIBLY MARKED AS SHOWN WITH THE VIKING LOGO, PART NUMBER & DATE CODE. INITIAL LOCATION OF MARKING.  
 2. ACCEPTS SIZE 16 PIN CONTACT  
 3. PERFORMANCE CHARACTERISTICS, PACKAGING AND QUALITY ASSURANCE INFORMATION FOR VIKING TECHNOLOGIES, INC. PRODUCT SPECIFICATION PS-AMCOR2A03.  
 4. WEIGHT OF THE RECEPTACLE ASSEMBLY WITH PROTECTIVE CAP: .22 OUNCES MAX.  
 5. A MAXIMUM FLASH OF .005 IS PERMISSIBLE ON THE LOCKING CORNERS SPECIFIED ONLY.  
 6. A MAXIMUM FLASH OF .005 IS PERMISSIBLE ON THE CORNERS AND EDGES SPECIFIED.  
 7. THE RECEPTACLE ASSEMBLY WITH PIN CONTACTS IS PACKAGE INDIVIDUALLY AS A SET IN PLASTIC BAG THAT IS LABEL WITH THE VIKING PART NUMBER FOR THE INSULATION BLOCK. SURFAC: AMCOR2A03-4C

REV	DATE	BY	CHKD	DESCRIPTION
1	05-17-91	...	...	...
2	05-17-91	...	...	...
3	05-19-91	...	...	...
4	05-19-91	...	...	...
5	05-19-91	...	...	...
6	05-19-91	...	...	...
7	05-19-91	...	...	...
8	05-19-91	...	...	...
9	05-19-91	...	...	...
10	05-19-91	...	...	...

SALES



## CONTACTS AND TOOLS

The AMC02RA03 In-Line Receptacles accept size 16 gauge pin contacts. There are 3 different contacts that can be supplied depending on the application and customer requirements.

### Contacts

AMC02RA03X Contacts				
Part Number	Contact Size	Contact Type	Description	Cost
BACC47CN2	16 Gauge	Pin	Rhodium Plated	High
BACC47CN2S	16 Gauge	Pin	Selective Gold Plated	Mid
M39029/31-229	16 Gauge	Pin	Mil Spec Gold Plated	Low

### Tools

AMC Series Tools				
Contact Size	Crimp Frame	Crimp Tool Turret	Insertion Tool	Removal Tool
16	M22520/01-01	M22520/01-02	M81969/17-03	M81969/19-06



## Mating Guide

<b>Straight Plug</b>	<b>In-Line Receptacle</b>	<b>Panel Mount Receptacle</b>
<b>AMC02PA03B</b>	<b>AMC02RA03B</b>	<b>AMC12RA03B</b>
<b>AMC02PA03R</b>	<b>AMC02RA03R</b>	<b>AMC12RA03R</b>
<b>AMC02PA03W</b>	<b>AMC02RA03W</b>	<b>AMC12RA03W</b>

Quick Links: Click on link below to search:

Part Number Search: [Click Here](#)

Tech Support: [Click Here](#)

Request a Quote: [Click Here](#)