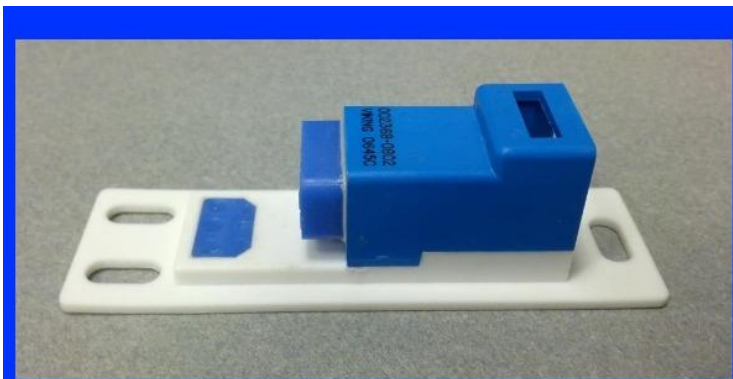




INTRO CORPORATION

Integrity, Value and Quality since 1976

BACC65AM INFORMATION



BACC65AM802P

*Connector, Electrical, Rectangular, Receptacle,
Pin Contacts, Latch Coupling, 6 Position, Lighting Connector*

TABLE OF CONTENTS

Page 1: Title Page

Page 2: Part Number Coding

Page 3: Drawing and Dimensions

Page 4: Insert Arrangement

Page 5: Tools and Mating Guide

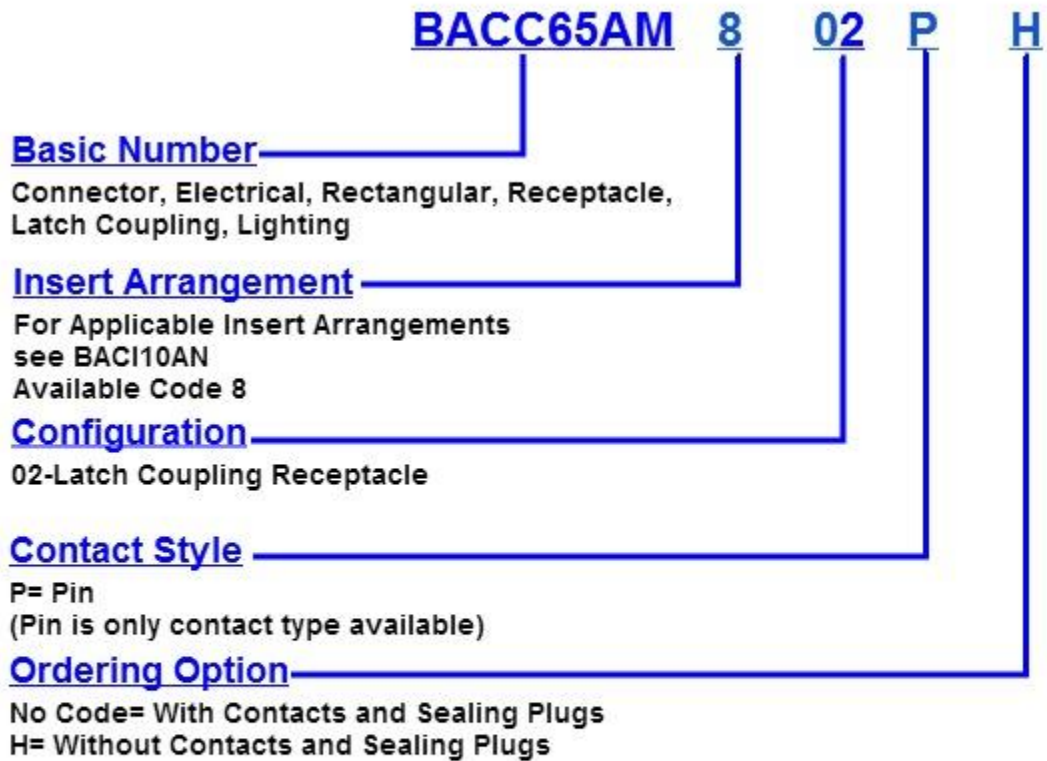
Page 6: Quick Links



BACC65AM

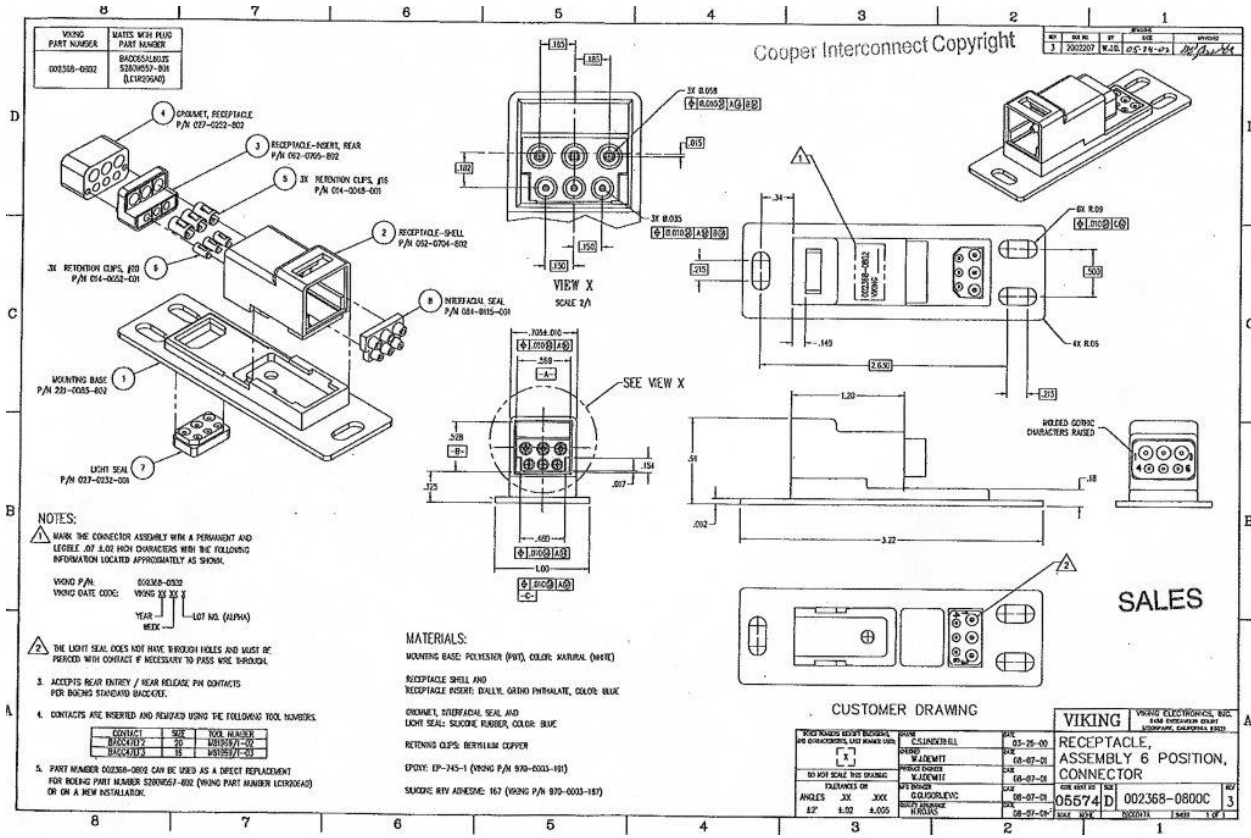
CONNECTOR, ELECTRICAL, RECEPTACLE, RECTANGULAR, LATCH COUPLING, LIGHTING

ORDERING GUIDE



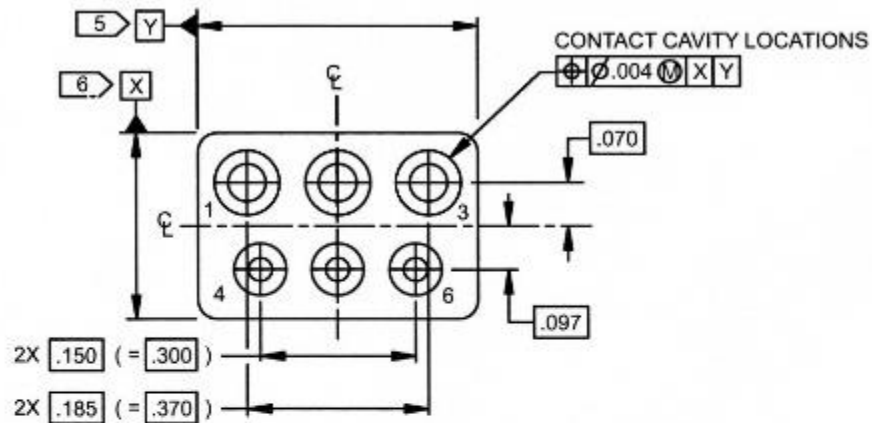


BACC65AM DRAWING AND DIMENSIONS





INSERT ARRANGEMENT #800



INSERT ARRANGEMENT 800 1 2

TABLE VIII

INSERT ARRANGEMENT	NUMBER OF CONTACTS	CONTACT SIZE	INSERT CAVITY LOCATION
800	3	20	4 THRU 6
800	3	16	1 THRU 3

BACC65AM802P INSERT ARRANGEMENT # 800 CONTACTS

QTY 3 #20 GAUGE PINS=BACC47EF2

QTY 3 #16 GAUGE PINS=BACC47EF3



BACC65AM802P SERIES CONTACTS and TOOLS					
BOEING CONTACT PART NUMBER	CONTACT SIZE	CONTACT TYPE	INSERTION & REMOVAL TOOL	CRIMP TOOL	POSITIONER
BACC47EF2	20	PIN	M81969/1-02	M22520/2-01	M22520/2-02 M22520/2-08
BACC47EF3	16	PIN	M81969/1-03	M22520/1-01	M22520/1-02

BACC65AM MATING GUIDE	
RECEPTACLE	PLUG
BACC65AM802P S280W557-802 002368-0802	BACC65AL803S S280W557-801 LC1R206A0



Quick Links: Click on link below to search:

Part Number Search: [Click Here](#)

Tech Support: [Click Here](#)

Request a Quote: [Click Here](#)